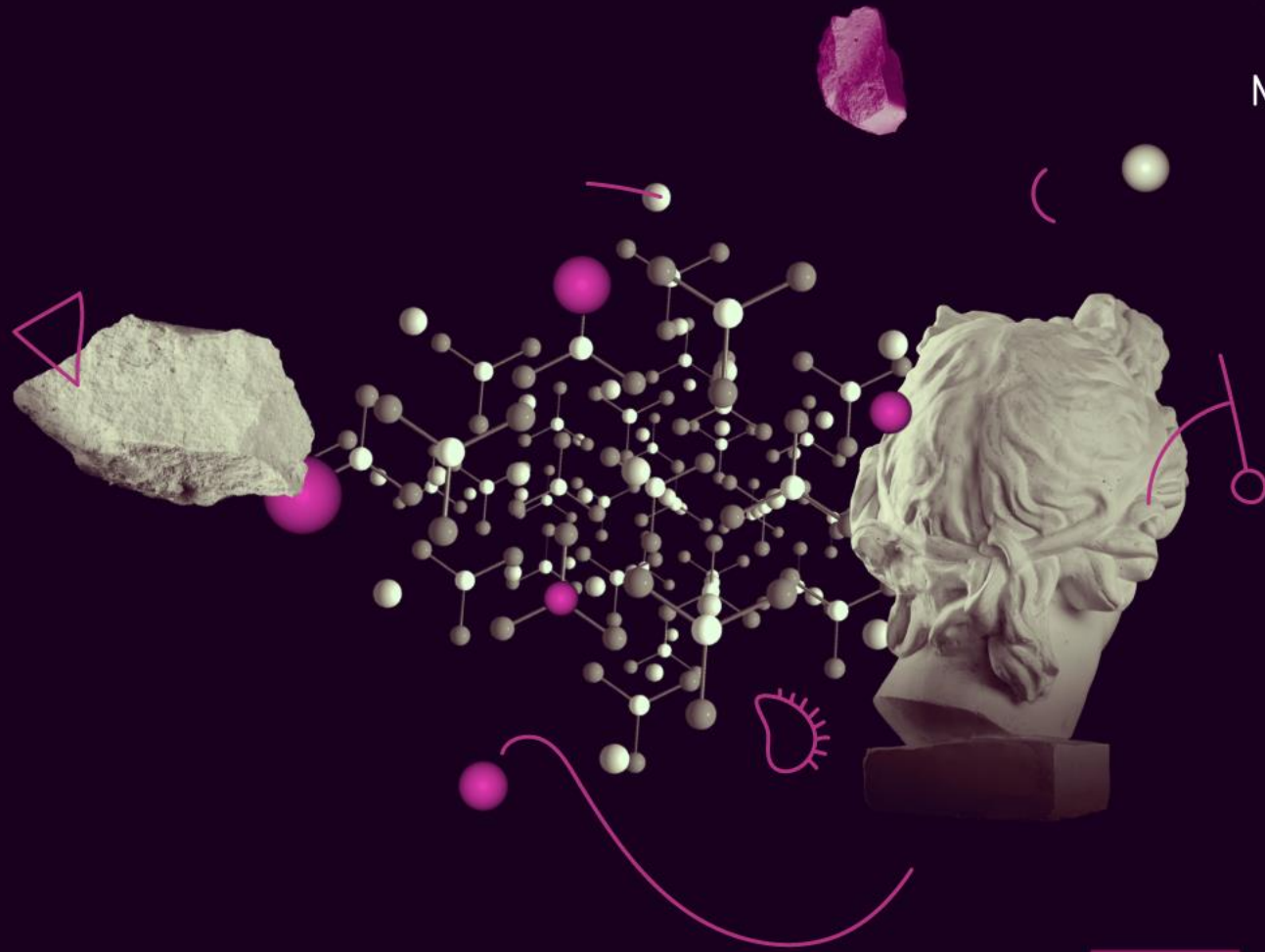




# MSCA

Marie Skłodowska-Curie Actions

*Developing talents, advancing research*



## All you need to know about MSCA Staff Exchanges

**Evangelos DASKALOPOULOS** Project Adviser, REA

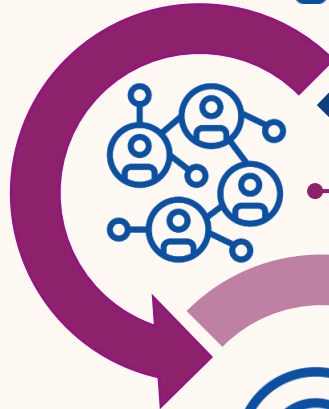
**Aikaterini LAZARIDOU** Project Adviser, REA

**Sotirios KIOKIAS** Research Programme Manager, REA

Marie Skłodowska-  
Curie Actions

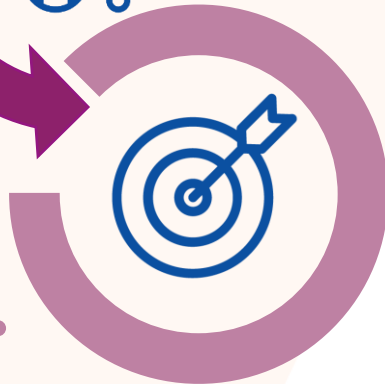
# Overview

Policy background



Staff Exchanges

Proposal submission  
and evaluation





# 1. Policy background

# The MSCA under Horizon Europe



## Pillar I EXCELLENT SCIENCE

European Research  
Council

Marie Skłodowska-Curie  
Actions

Research Infrastructures



## Pillar II GLOBAL CHALLENGES & EUROPEAN INDUSTRIAL COMPETITIVENESS

Clusters

- Health
- Culture, Creativity & Inclusive Society
- Civil Security for Society
- Digital, Industry & Space
- Climate, Energy & Mobility
- Food, Bioeconomy, Natural Resources, Agriculture & Environment

Joint Research Center



## Pillar III INNOVATIVE EUROPE

European Innovation Council

European Innovation  
Ecosystems

European Institute of  
Innovation & Technology

WIDENING PARTICIPATION AND STRENGTHENING THE EUROPEAN RESEARCH AREA

Widening participation & spreading  
excellence

Reforming & enhancing the European R&I  
system

# Marie Skłodowska-Curie Actions (MSCA)

Doctoral  
Networks

COFUND

Postdoctoral  
Fellowships

Staff  
Exchanges

MSCA and  
Citizens





# 2. Staff Exchanges Main features

# What is Staff Exchanges?



Research & Innovation **mobility** action



It equips researchers and organisations **worldwide** with advanced skills and cutting knowledge



It fosters mobility of entities from both the **academic** and **private** sectors



Can be combined with other programmes (**synergy**)



The **budget** allocated in 2025 call is **€ 82.76 M (\*)**

# Objectives



International,  
inter-sectoral  
and  
interdisciplinary  
mobility of R&I  
staff  
(secondments)



Knowledge  
transfer  
between  
participating  
organisations



Collaboration  
between the  
academic and  
non-academic  
sectors  
(including SMEs)



Cooperation  
across the globe



# Added value

## Staff members



Transferable skills & competences



Employability & career prospects



Ideas converted into products, processes & services



International exposure



Networking & communication

## Organisations



Transfer of knowledge



Collaborative networks

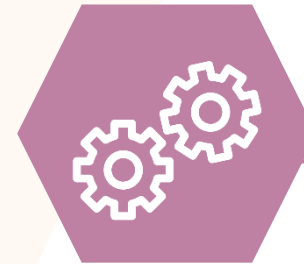


R&I capacity

# Who can participate in MSCA-SE projects?

Consortium of min. **3 legal entities** in **3 different countries**, 2 of which in a different EU Member State or HE Associated Country

Academic sector



Non-academic sector

# Eligible SE research consortia (for min of 3 entities)

If all 3 entities are **European (MS/AC)**, one should be from a **different sector**



If all 3 entities from **same sector (e.g. academic)** one must be **located outside Europe**



# Eligible staff



## Seconded staff members



Any type of staff involved in R&I activities (researchers, administrative staff, managerial staff, technical staff)

Researchers at any career stage (e.g. from doctoral candidates to postdoctoral researchers)

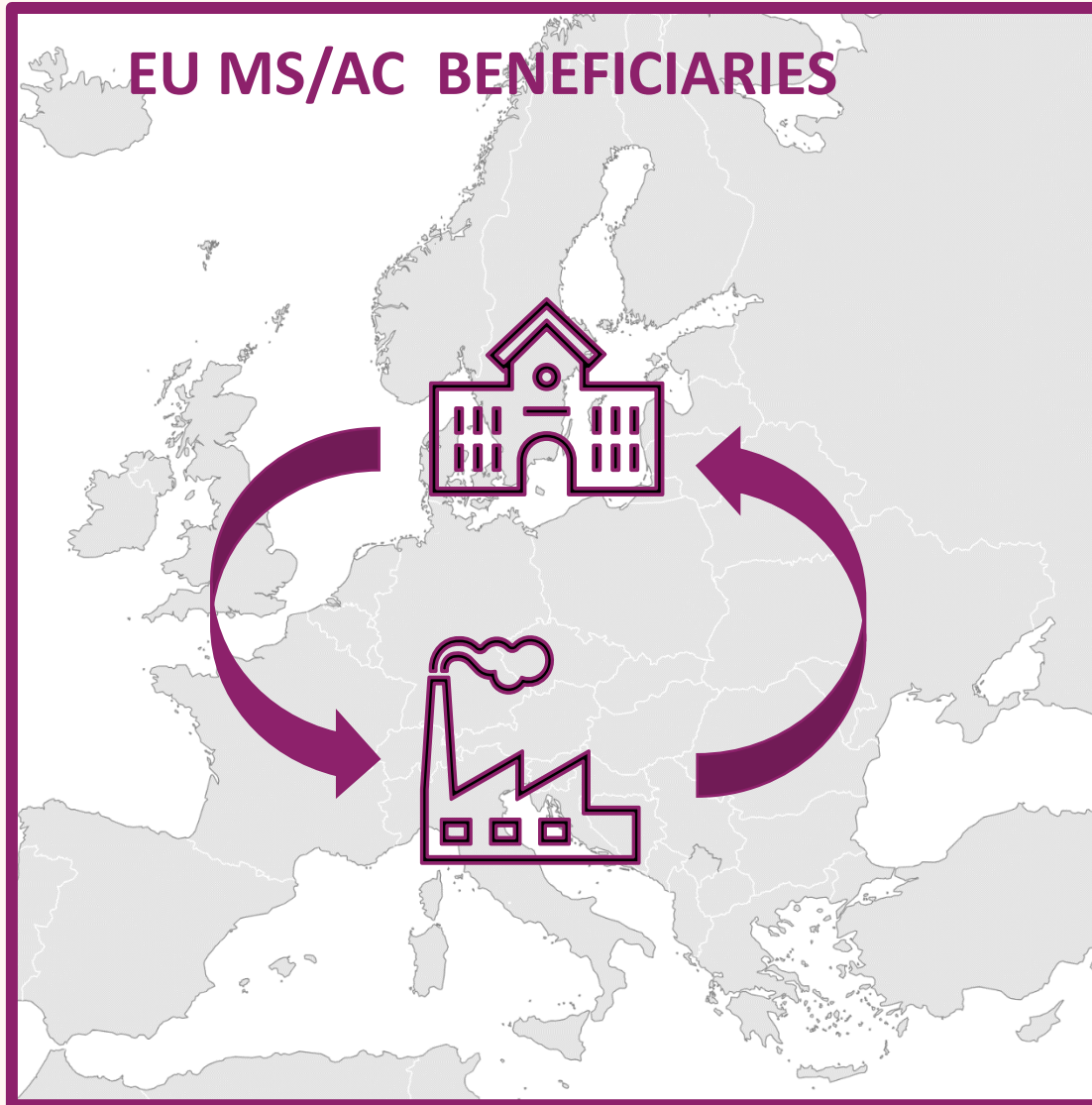
Actively engaged in research and/or innovation activities for at least **1 month** prior at the sending institution

Each staff member is seconded for a period of **1 to 12 months** (may be split into several stays)

Staff needs to be devoted **full-time** to the action during the secondment

After the secondment, staff should **return to their sending institution**

# Eligible secondments in Europe & AC



**<1/3**

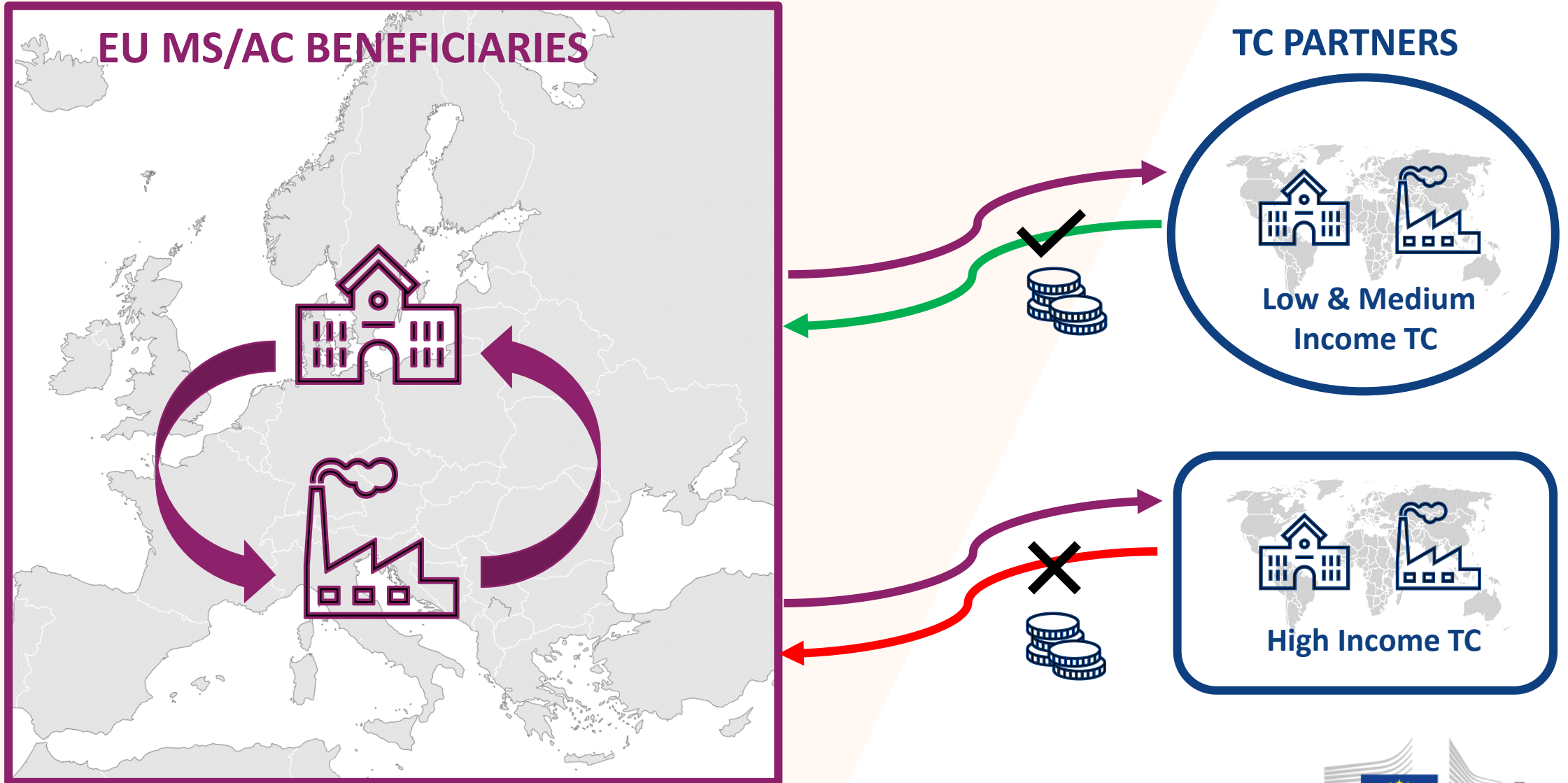
# Same-sector secondments in Europe (MS/AC)

- $\leq 1/3$  of the total secondments funded by the EU, if considered *Interdisciplinary*
- Interdisciplinary secondments integrate aspects from two or more different scientific disciplines
- Important: scientific panels + descriptors/MSCA keywords from proposal form part A (see [REA Website](#))





# Eligible international secondments

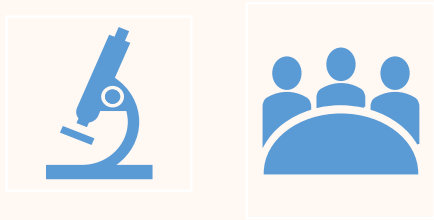


# What does Staff Exchanges fund?



Budget of SE project based on the number of planned secondments

# INOVEC #101086257 HORIZON-MSCA-2021-SE-01



The **INOVEC** project seeks to establish a broad European network for developing innovative, integrated mosquito vector control methods against emerging arboviruses



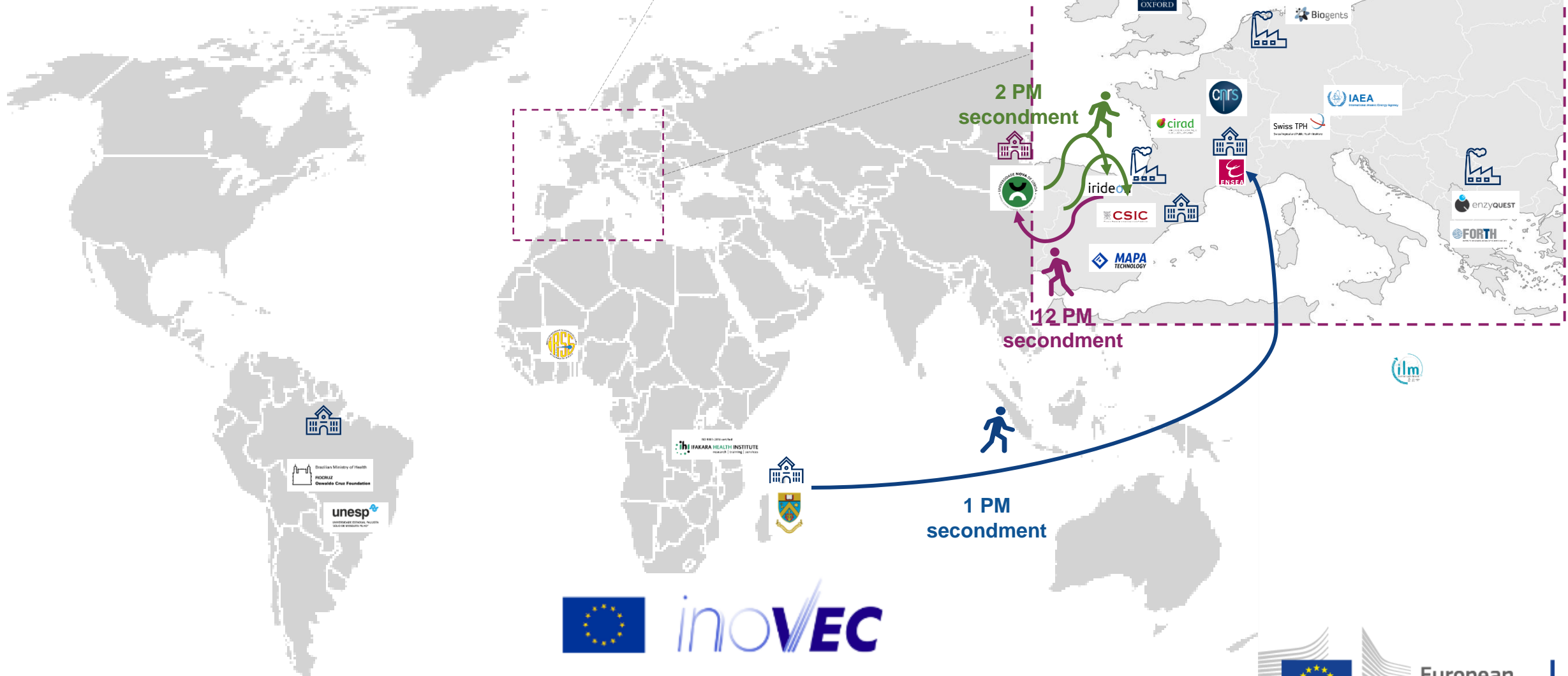
- **23 partners**
- **14 based in EU/AC**
- **9 entity based in a TC**
- **8 SME partners**



€ 1,407,600.00



# INOVEC Project Example



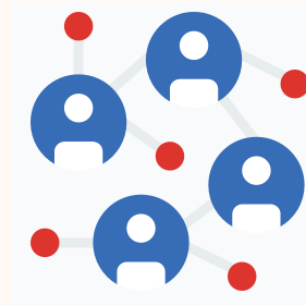
# Key features



**BOTTOM UP**  
with different  
scientific panels

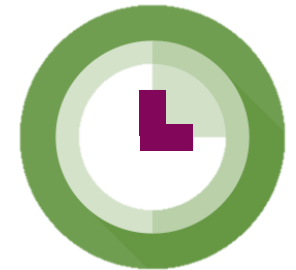


**TOP UP ALLOWANCE**  
**5010 €:**  
2710 € - staff allowance  
2300 € - organisation



**SECONDMENTS**  
**1-12** months per staff

- Interdisciplinary
- Intersectoral
- International



**DURATION**  
**4** years  
**360** person-months  
per project (max)

# Staff Exchanges - making a difference



## **WORLD-WIDE**

The highest participation of non-EU countries in MSCA



## **BUSINESS PARTICIPATION**

Businesses receive an estimated 30% of the available funding



## **PATENTS**

Significant share of all patents in MSCA actions



## **SUCCESS RATE**

Between 20 & 40% depending on the discipline and on the year





# 3. Staff Exchanges

Proposal submission & evaluation

# Key Dates & Budget Call 2025



Call Opening : **27 March 2025**

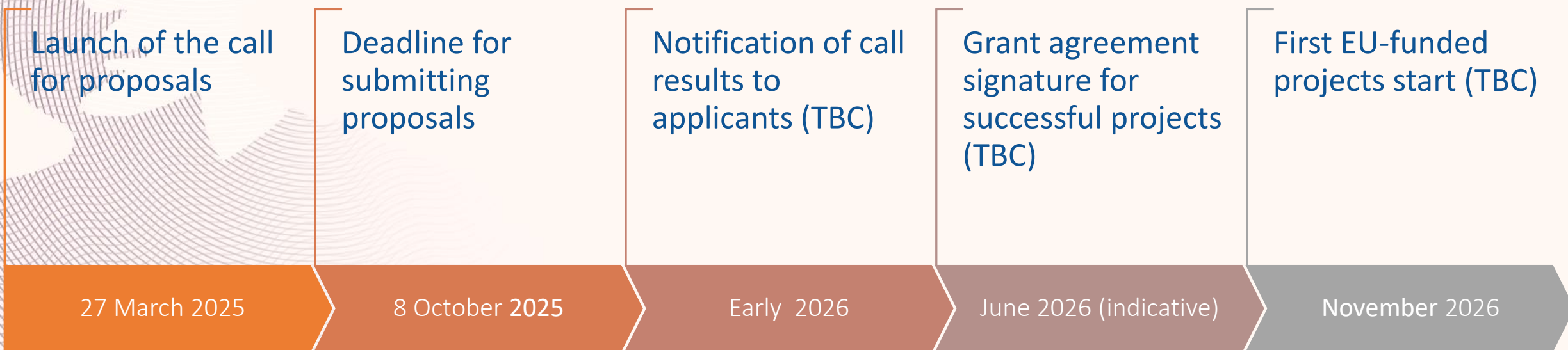


Call Closure : **8 October 2025**

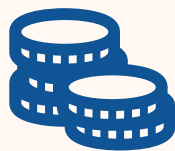


Call Budget : **€ 82.76 M (\*)**

# HORIZON-MSCA-2025-SE-01 – Indicative timeline



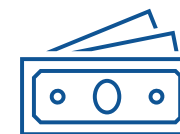
# Key changes



This year budget is  
**€ 82.76 M (\*)**



Unit cost is  
increased to  
**€ 5010**



Staff allowance  
increased to  
**€ 2710**



**CH** back as  
Beneficiary



**LoC** no more  
needed

# Reference documents



MSCA Work  
Programme & annexes



Proposal templates



Frequently Asked  
Questions

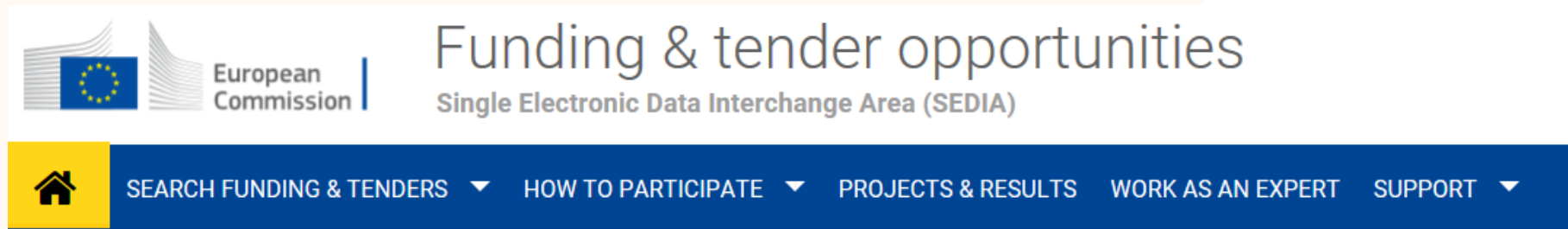
# Staff Exchanges 2025 – EU Funding & Tenders Portal

The screenshot shows the EU Funding & Tenders Portal interface. At the top left is the European Commission logo. The main header contains the text 'EU Funding & Tenders Portal' and a 'Sign in' button with a language selector set to 'EN'. Below the header is a navigation menu with items: Home, Funding, Procurement, Projects & results, News & events, Work as an expert, and Guidance & documents. A search bar is located on the right side of the menu. The breadcrumb trail reads: Home > Funding > Calls for proposals > MSCA Staff Exchanges 2025. The main title is 'MSCA Staff Exchanges 2025' with the identifier 'HORIZON-MSCA-2025-SE-01-01'. A 'Topic' tag indicates 'Call for proposal'. On the left, an 'Internal navigation' sidebar lists: General information, Topic description, Mission, Destination, Conditions and documents (circled in red), Budget overview, and Partner search announce... (with a red arrow pointing to it). The main content area is titled 'General information' and contains the following details:

<b>Programme</b> Horizon Europe (HORIZON)		
<b>Call</b> MSCA Staff Exchanges 2025 (HORIZON-MSCA-2025-SE-01)		
<b>Type of action</b> HORIZON-TMA-MSCA-SE HORIZON TMA MSCA Staff Exchanges	<b>Type of MGA</b> HORIZON Unit Grant [HORIZON-AG-UN]	<b>Forthcoming</b>
<b>Deadline model</b> single-stage	<b>Planned opening date</b> 27 March 2025	<b>Deadline date</b> 08 October 2025 17:00:00 Brussels time



# How to start writing your proposal



## Start submission

Need help?

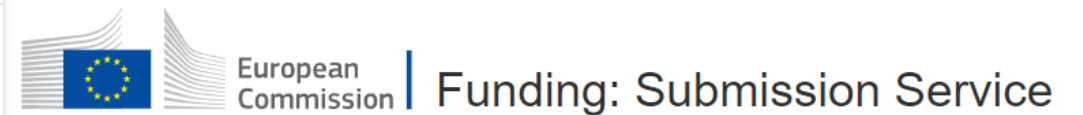
To access the Electronic Submission Service, please click on the submission-button next to the **type of action** and the **type of model grant agreement** that corresponds to your proposal. You will then be asked to confirm your choice, as it cannot be changed in the submission system. Upon confirmation, you will be linked to the correct entry point.

To access existing draft proposals for this topic, please login to the Funding & Tenders Portal and select the My Proposals page of the My Area section.

### Please select the type of your submission:

- HORIZON TMA MSCA Staff Exchanges [HORIZON-TMA-MSCA-SE], HORIZON Unit Grant [HORIZON-AG-UN]

Start submission



\*Similar for SE 2025



# Evaluation criteria



Excellence	Impact	Quality and efficiency of the implementation
Quality and pertinence of the project's <b>research and innovation objectives</b> (and the extent to which they are ambitious, and go beyond the state of the art)	Developing new and lasting <b>research collaborations</b> , achieving <b>transfer of knowledge</b> between participating organisations and contributing to improving <b>research and innovation potential</b> at the European and global level	Quality and effectiveness of the <b>work plan</b> , assessment of <b>risks</b> , and appropriateness of the effort assigned to work packages
Soundness of the <b>proposed methodology</b> (including i3 approaches, consideration of the gender dimension and other diversity aspects, and the quality of open science practices)	Credibility of the measures to enhance the <b>career perspectives</b> of staff members and contribution to their <b>skills development</b>	Quality, capacity and role of each participant, including <b>hosting arrangements</b> and extent to which the consortium as a whole brings together the necessary expertise
Quality of the proposed <b>interaction between the participating organisations</b> in light of the research and innovation objectives	Suitability and quality of the measures to <b>maximise expected outcomes and impacts</b> , as set out in the dissemination and exploitation plan, including communication activities	
	The magnitude and importance of the project's contribution to the expected <b>scientific, societal and economic impacts</b>	
50%	30%	20%

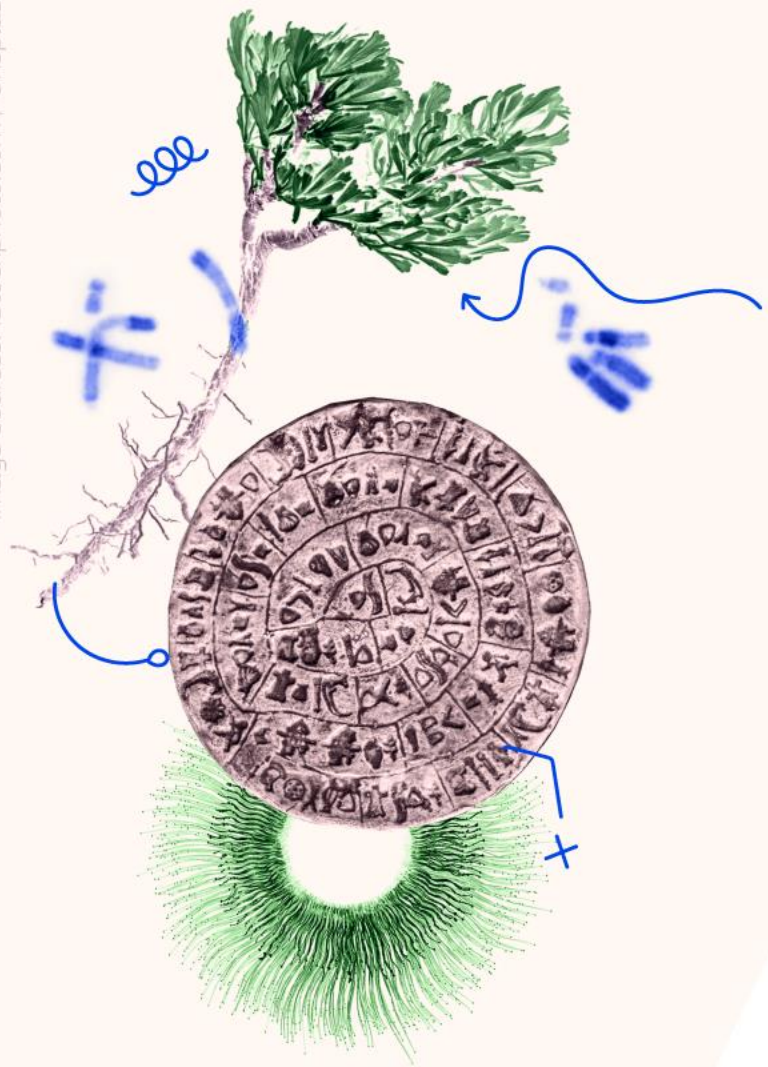
# Evaluation

Formula for Staff Exchanges success stories



$$= (E + I) \text{Impact}$$

Excellence and Implementation are closely interlinked!



# How to find partners?



NETWORKING  
EVENTS  
(CONFERENCES,  
WORKSHOPS,  
ETC.)



FORMER OR  
CURRENT  
COLLABORATIONS



JOINT  
PROJECTS



FUNDING AND  
TENDER  
OPPORTUNITIE  
S PORTAL



MSCA  
MATCHMAKING  
PLATFORM



EUROPEAN  
ENTERPRISE  
NETWORK



NATIONAL  
CONTACT  
POINT



# How to find partners F&T opportunities

The image shows a screenshot of the European Commission's EU Funding & Tenders Portal. The top navigation bar includes 'Home', 'Funding', 'Procurement', 'Projects & results', 'News & events', and 'Work as an expert'. The 'Funding' menu is open, showing options like 'Calls for proposals', 'Participant register', 'Partner search' (highlighted with a red circle and arrow), 'EU programmes', 'Funding updates', and 'Horizon4Ukraine'. The main content area shows the 'Partner search' results page for the 'Horizon Europe (HORIZON)' programme. It displays 10,000+ results and lists two organizations: INAGROPEC SOCIEDAD LIMITADA (Spain) and SYNYO GmbH (Austria). The bottom of the page features the European Commission logo and the text 'Discover the funding & tenders opportunities'.

# Tips and tricks



**Closely follow the call requirements**



**Highlight the EU dimension**



**Sustainability of collaboration**



**Follow available guidelines**



**Get a second opinion**



**Contact your National Contact Point (NCP)**



# Synergies between MSCA SE and other grants

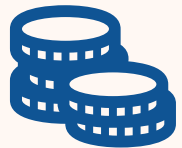
A synergetic MSCA SE project



Travel



Accommodation

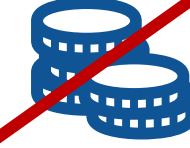


Subsistence



Management costs related to the SE project

Another grant



# Research Enquiry Service

For questions about  
research and Horizon Europe  
please contact  
the [Research Enquiry Service \(europa.eu\)](https://europa.eu)



© European Union 2021

Unless otherwise noted the reuse of this presentation is authorised under the [CC BY 4.0](https://creativecommons.org/licenses/by/4.0/) license. For any use or reproduction of elements that are not owned by the EU, permission may need to be sought directly from the respective right holders. Image sources: iStockphoto.com/Unsplash





© European Union, 2024. Image source: everettcollection, Canva.

*“Nothing in  
life is  
to be feared;  
it is only  
to be  
understood”*



# Thank you!

---

**European Research Executive Agency**

**#MSCA #HorizonEU**



**@REA\_research @MSCAactions**

**[https://rea.ec.europa.eu/funding-and-grants/horizon-europe-marie-sklodowska-curie-actions\\_en](https://rea.ec.europa.eu/funding-and-grants/horizon-europe-marie-sklodowska-curie-actions_en)**



© European Union 2021

Unless otherwise noted the reuse of this presentation is authorised under the [CC BY 4.0](https://creativecommons.org/licenses/by/4.0/) license. For any use or reproduction of elements that are not owned by the EU, permission may need to be sought directly from the respective right holders. Image sources: [iStockphoto.com/Unsplash](https://www.istockphoto.com/)

